


# FISHWAY STATUS REPORT

**Date:** 1/26/2014  
**Inspection Period:** 1/19 thru 1/25/2014

All JD Fishways are inspected once per day during winter season;  
 frequent monitoring of the PLC displays in SMF Fisheries Office as necessary.

	<b>JOHN DAY DAM</b>	
	JD/WC Project-Fisheries P.O. Box 823 Rufus, Oregon 97050 Phone: 541-506-7860	

<b>John Day Dam</b>	<b>Inspections</b>	<b>Criteria</b>	<b>Total Number of Inspections:</b> 7	<b>Temperature:</b> 40.1 F
	<b>Out of Criteria</b>	<b>Limit</b>		<b>Secchi:</b> 5.5 Ft.
<b>NORTH FISHWAY</b>			In regular service and meeting the optimal FPP criteria	
Exit differential	0	≤ 0.5'	AWS pumps OOS on 1/24, 1500-1800 per FPOM's MOC	
Exit Control weirs	0	High setting	High setting is normal for JDN	
Count station differential	0	≤ 0.3'		
Weir crest depth	0	1.0' ± 0.1'		
Entrance differential	0	1.0' - 2.0'	AVG 1.5	
<b>SOUTH FISHWAY</b>			OOS for the annual maintenance outage since 1/4/14	
Exit differential	N/A	≤ 0.5'		
Exit Control weirs	N/A	MID setting	MID is normal for JDS	
Count station differential	N/A	≤ 0.3'		
Weir crest depth	N/A	1.0' ± 0.1'		
South entrance differential	N/A	1.0' - 2.0'	AVG oos	
Entrance weir SE1	N/A	depth (≥ 8')	AVG oos	
Collection channel velocity	N/A	1.5 - 4 fps	AVG oos	
Bay 1 differential	N/A	1.0' - 2.0'	AVG oos	
N. Entrance PH(Bay 19)differential	N/A	1.0' - 2.0'	AVG oos	
Entrance weir NE1	N/A	depth (≥ 8')	AVG oos	
Entrance weir NE2	N/A	depth (≥ 8')	AVG oos	
<b>JUVENILE PASSAGE</b>			OOS for winter maintenance since 12/20. RTS in late March 2014.	
Forebay/bypass conduit differential	N/A	4.0' - 5.0'	AVG 4.6	
Submersible traveling screens	N/A	visual inspect		
Turbine trashrack drawdown	N/A	<1.5', wkly		
Vert barrier screen drawdown	N/A	<1.5', wkly		
Spill volume	N/A	n/a		
Spill pattern	N/A	n/a		
Turbine Unit Priority	N/A	per FPP		
Turbine 1% Efficiency	N/A	per FPP		

**SMOLT MONITORING FACILITY**

**Operation:** SMF OOS since 12/17/13. RTS mid March 2014

**Debris:** N/A

**Maintenance:**

SMF fully winterized, annual maintenance underway.

SMF CCTV replacement underway; new display monitors and control console already installed. Replacement camera will be installed soon.

**Research:** None

**Fallbacks:** AVG: 0 MAX: 0 MIN: 0

**OTHER ISSUES:****JOHN DAY**

**Birds:** See Avian tabs.

120 avian lines are properly installed. Five lines are missing; one attaching to Navlock broke on 1/10/14. JD Management preparing a plan for the missing lines' replacement before 2014 passage season. O&M manual continues to be unavailable and the Project will need District's support to reinstall missing lines on time; a coordination meeting with the District personnel occurred on 1/23 and another is scheduled for 1/30.

**Operations:**

JD North Fishway returned to regular service on 12/19 and it has been meeting the optimal FPP criteria since.

JD South Fishway dewatered/OOS since 1/07/14. Collection channel dewatered on 1/09. Annual PMs and maintenance underway; RTS mid March.

All STSs were removed from MU gatewells for winter maintenance by 19 December. JBS started 1/3 open orifices rotation schedule on 12/20.

JBS collection channel is scheduled for dewatering/ inspection by JD Fisheries on 4 February 2014.

**Maintenance:**

JD North AWS pumps were OOS on 1/24, 1500 to 1800 hrs for the entrance weir's repair, per FPOM's MOC. Due to incorrect parts the repair was delayed; another attempt will be scheduled soon. Kudos to JD Structural crew for their outstanding support and work !

JD South Fishway - lamprey plating installation by McMillen, LLC (contractor) is slated to start on 1/27.

Calibration: 1/5/2014 All JD Fishways' PLCs/ water level sensors were within 0.3' margin of error.

**Research:**

Fish counting at both JD Fishways ended 10/31/13 . Video counting began 11/1 and will continue through the winter.

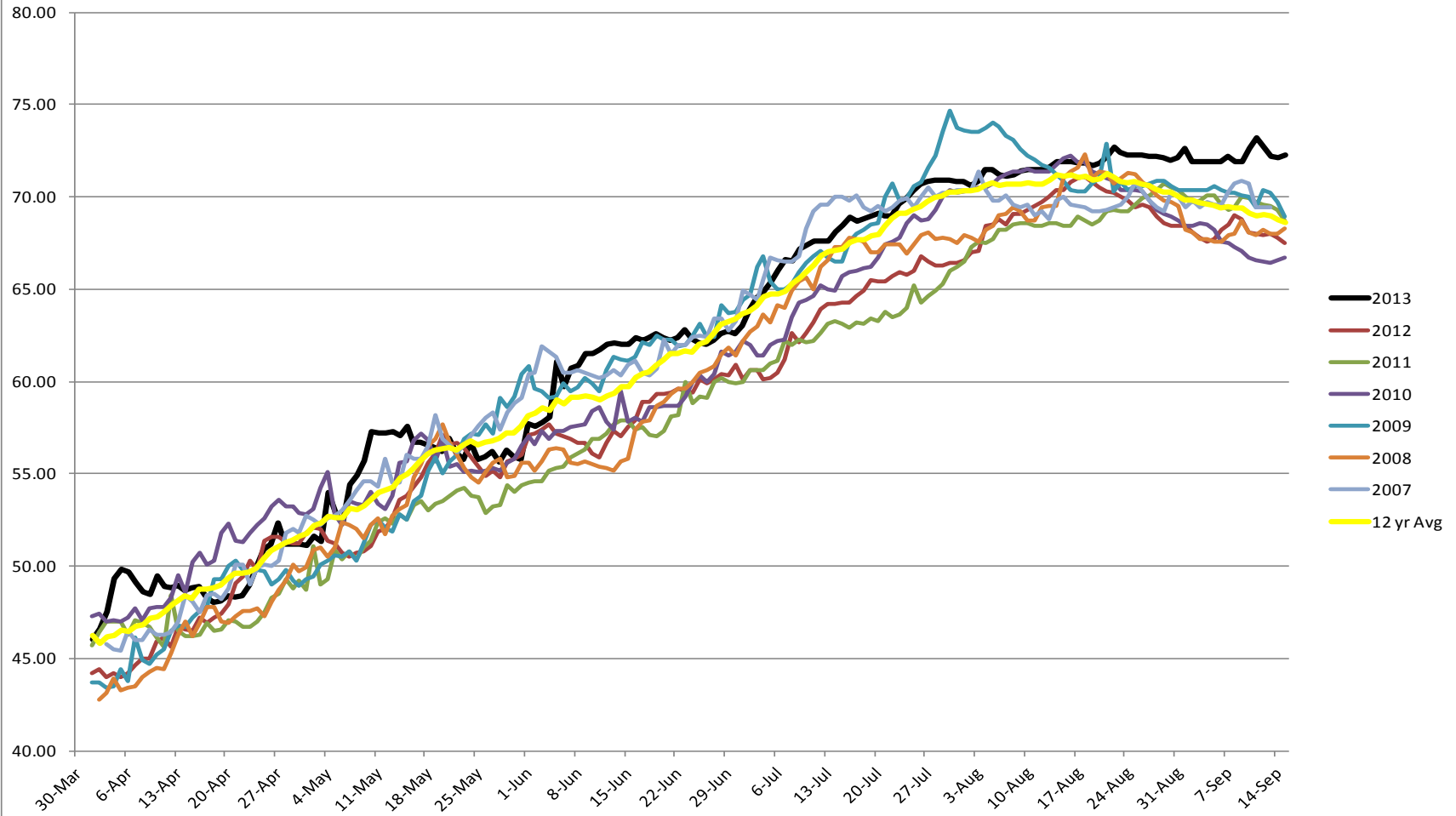
Adult Salmonids Radio telemetry evaluations are ongoing at both JD adult fishway. University of Idaho crew is in charge of detecting of all adult adult salmonids, which were first tagged at Bonneville Dam.

Glen A. Smith PE

Date: \_\_\_ 27-Jan-14

OPM John Day/Willow Creek Project

2007-2013 Water Temps JDA w/ 12yr avg



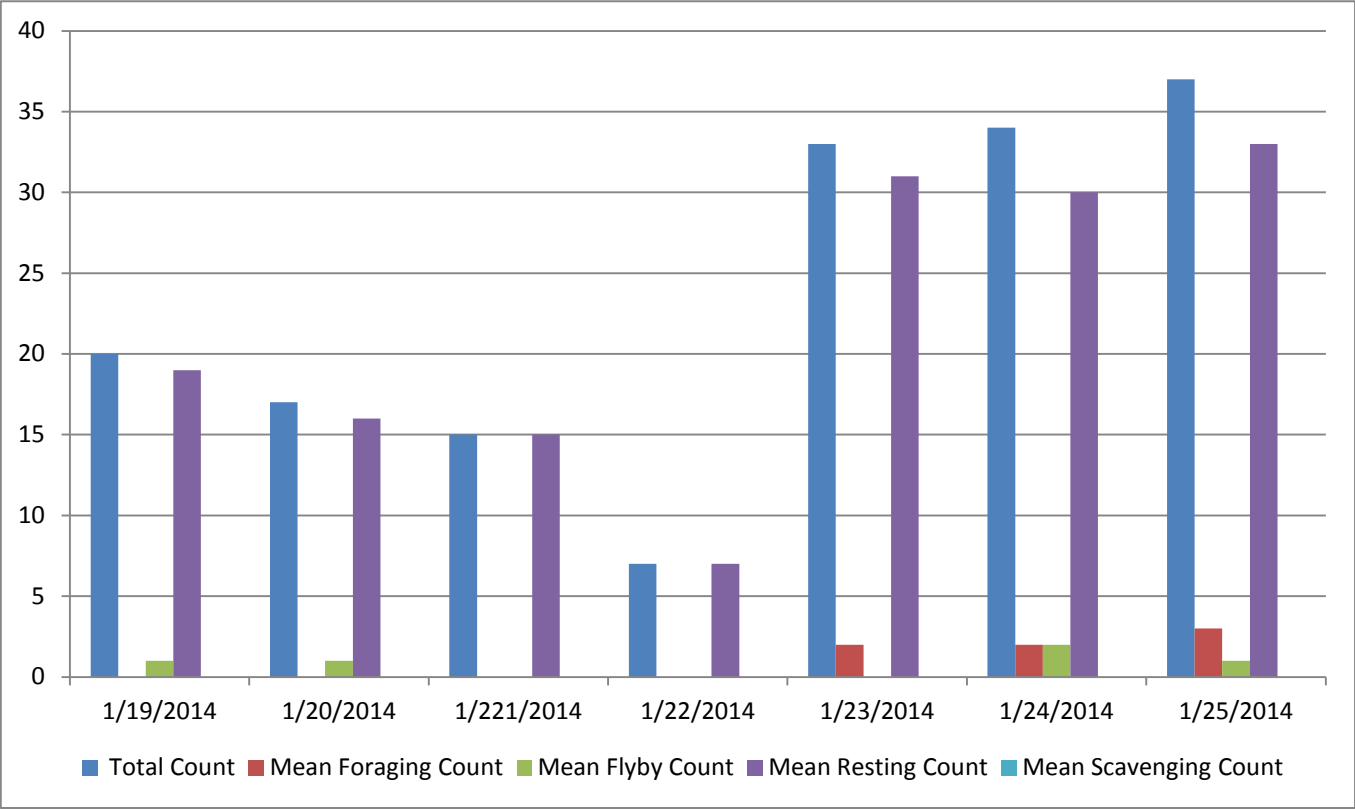
## JDA COLLECTION CHANNEL VELOCITY

Date 21-Dec-13  
By: pk

Bay(s)	Time	Sec.	Velocity (f/s)
0-2	0:01:23	83	2.17
2 - 4	0:02:20	140	3.16
4 - 6	0:03:16	196	3.21
6 - 8	0:04:14	254	3.10
8 - 10	0:05:10	310	3.21
10 - 12	0:06:10	370	3.00
12 - 14	0:07:17	437	2.69
14 - 16	0:08:13	493	3.21
16 - 18	0:08:55	535	4.29

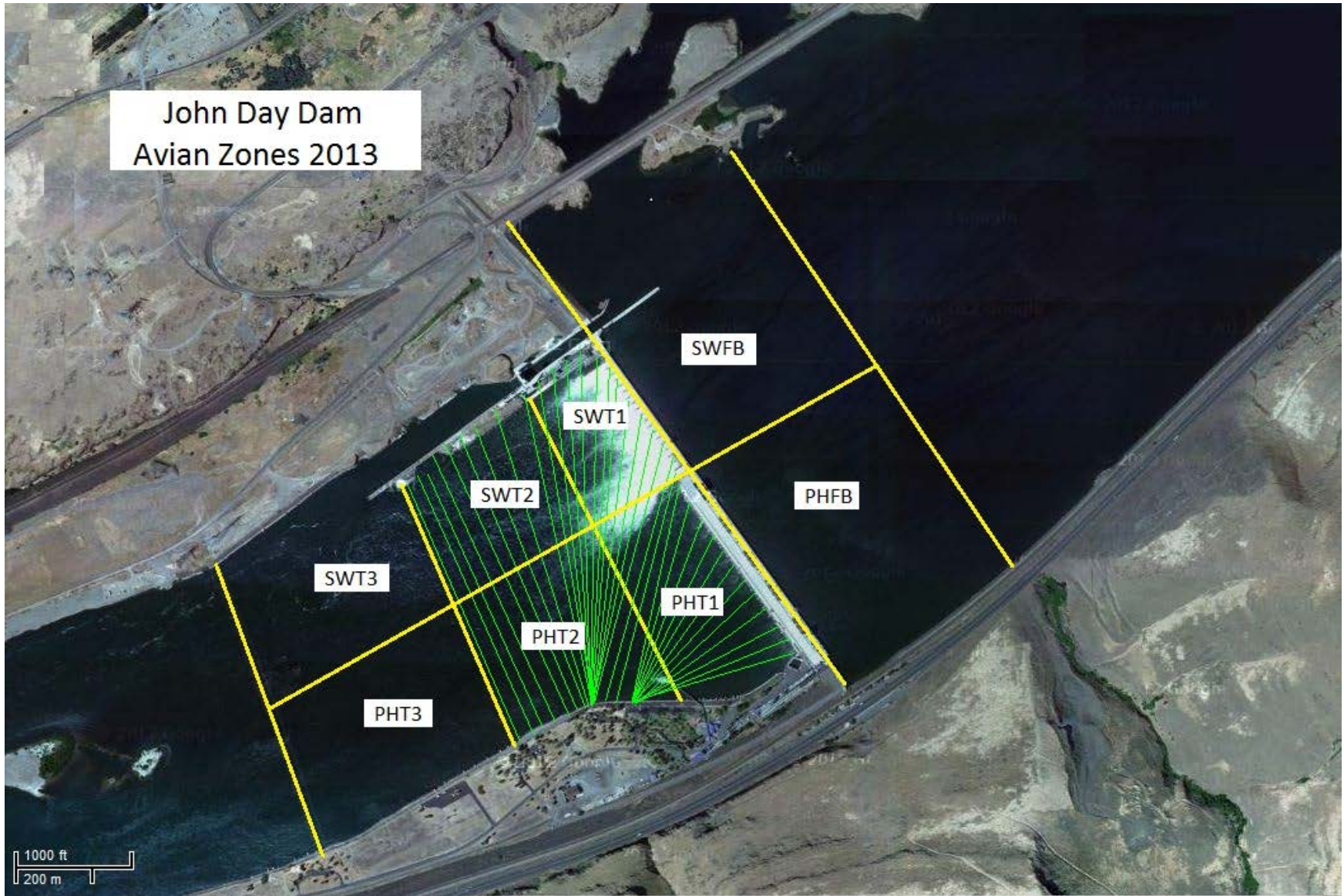
**3.12**

# Bird Count by Activity



Date	Total Count	Mean Foraging Count	Mean Flyby Count	Mean Resting Count	Mean Scavenging Count
1/19/2014	20	0	1	19	
1/20/2014	17		1	16	
1/221/2014	15	0		15	
1/22/2014	7			7	
1/23/2014	33	2		31	
1/24/2014	34	2	2	30	
1/25/2014	37	3	1	33	

John Day Dam  
Avian Zones 2013



**John Day:**

	Temp:	Secchi:		Fallbacks
Sun	41	6.0	oos	
Mon	41	6.0	oos	
Tues	40	5.5	oos	
Wed	40	5.5	oos	
Thur	40	5.5	oos	
Fri	40	5.5	oos	
Sat	39	5.5	oos	
AVG:	40.1	AVG: 5.5		AVG
				MAX
				MIN

	NE1	NE2	S.Ent	SE1	N.Ent	JBS Diff	Bay1	Bay19
Sun	oos	oos	oos	oos	1.5	4.7	oos	oos
Sun								
Mon	oos	oos	oos	oos	1.6	4.7	oos	oos
Mon								
Tues	oos	oos	oos	oos	1.6	4.6	oos	oos
Tues								
Wed	oos	oos	oos	oos	1.5	4.6	oos	oos
Wed								
Thur	oos	oos	oos	oos	1.5	4.6	oos	oos
Thur								
Fri	oos	oos	oos	oos	1.5	4.6	oos	oos
Fri								
Sat	oos	oos	oos	oos	1.6	4.6	oos	oos
Sat								
AVG:	oos	oos	oos	oos	1.5	4.6	oos	oos